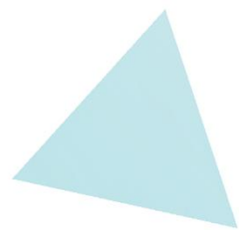


SUPPORT DOCUMENT

BULK LABEL PRINTING



palladium
Accounting

Contents

Overview.....	3
Purpose.....	3
How to Use Bulk Label Printing	3
Maintenance.....	3
Features	3
Processing Documents	5

Overview

The Bulk Label Printing function is an enhancement to the traditional label print function in the Enterprise Edition, allowing you to mass-print product labels at time of receiving or manufacture.

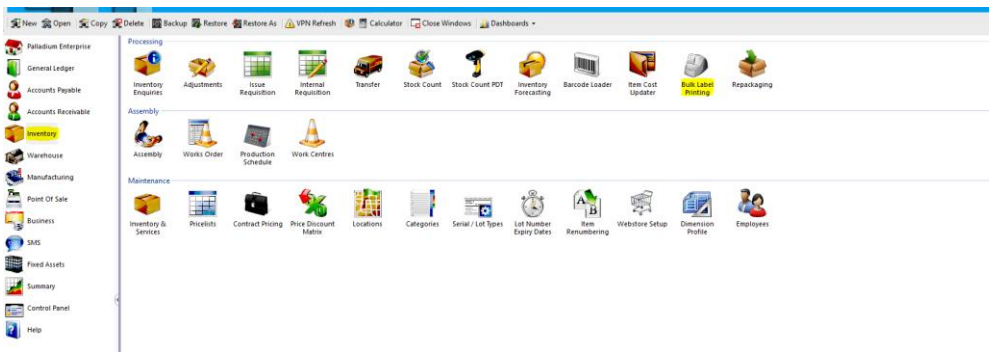
Purpose

The purpose of bulk label printing is to print labels at time of receiving for multiple items and quantities. You can also define different label layouts, such as shelf talkers, and also filter on items where prices have changed, and print labels for the received or on-hand quantities.

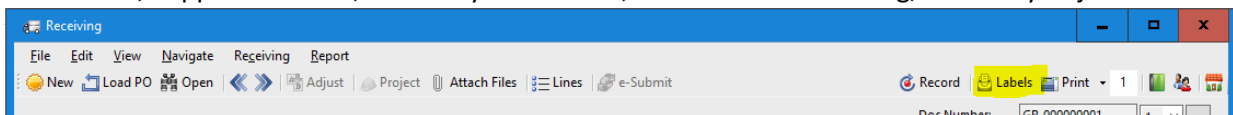
How to Use Bulk Label Printing

Maintenance

1. The bulk label print function is found in the inventory module under the Processing section.

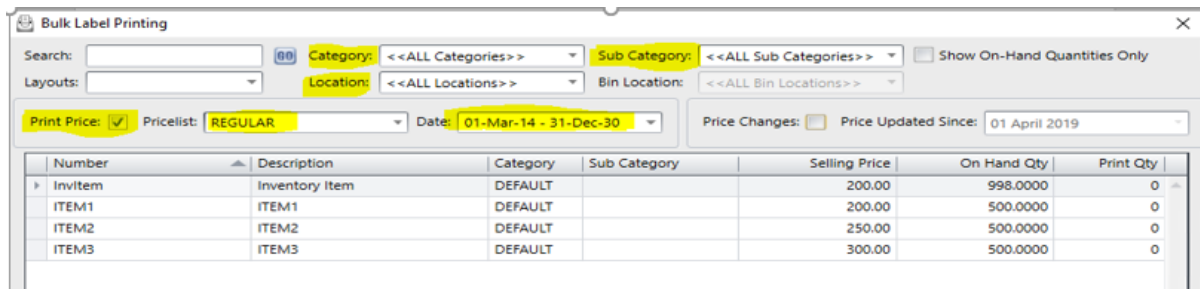


2. The function is also available on the following processing screens as seen below: GRV's, Supplier Invoices, Inventory Assemblies, Process Manufacturing, Inventory Adjustments.

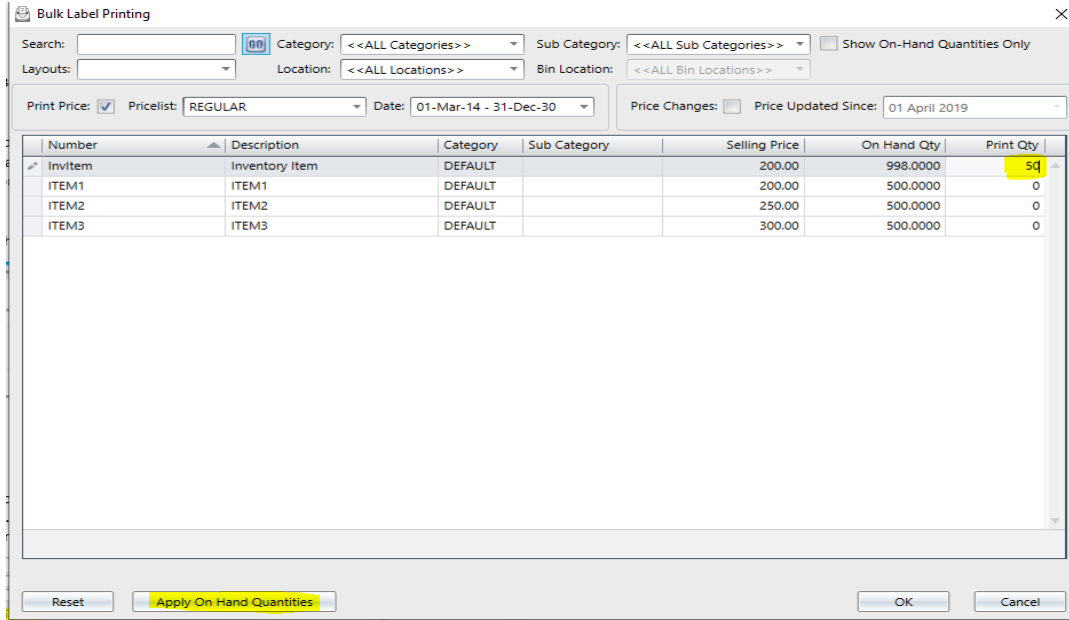


Features

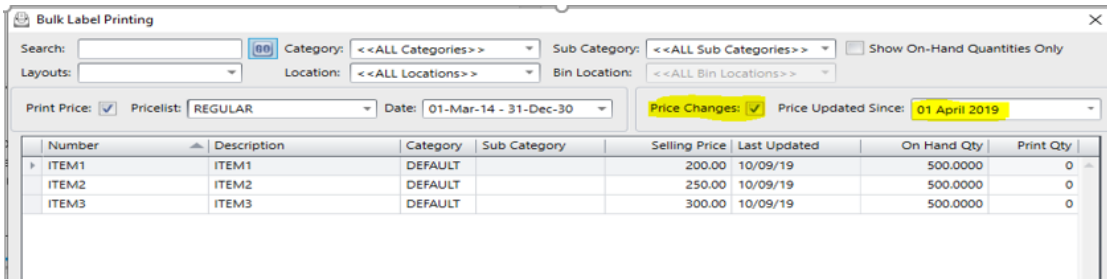
1. You can also choose whether you want to print the price in the label, and you can also select the pricelist you would like to use, and you can also filter your items by location, category or sub-category.



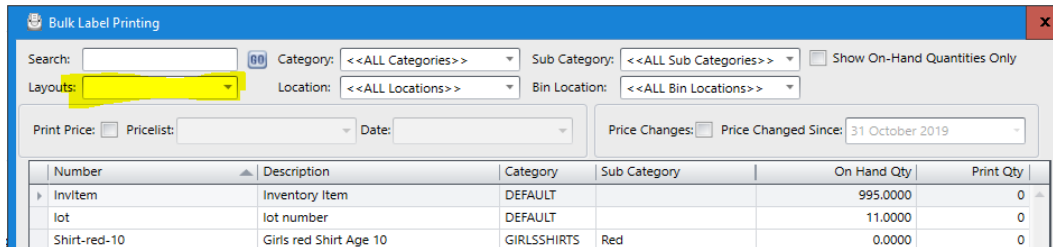
- You can either print labels for the quantities received (default), all your quantities on hand (Apply On Hand Quantities) or you can manually enter the quantities you would like to print.



- When selecting “Price Change” the system will only display the items, which have, had a change in their selling prices based on the date selected in the “Price Updated Since” filter.



- The Layout option allows you to print labels for different items using different label layouts and sizes. You can setup your different Layout designs in the Control Panel > Forms Setup > Label Docs.



Processing Documents

When printing Bulk Labels on from processing documents, only the Items used on that document will appear on the bulk label-printing screen.

Number	Description	Location	Qty	Bin	Unit	Price	Discount %	Tax Code	Tax	Amount
1	ITEM1	DEFAULT	10	DEFAULT	EA	20.00	0.00	02	28.00	200.00
2	ITEM2	DEFAULT	10	DEFAULT	EA	20.00	0.00	02	28.00	200.00
3	ITEM3	DEFAULT	10	DEFAULT	EA	35.00	0.00	02	49.00	350.00

Number	Description	Category	Sub Category	Selling Price	On Hand Qty	Print Qty
ITEM1	ITEM1	DEFAULT		1 250.00	510.00000	10
ITEM2	ITEM2	DEFAULT		250.00	510.00000	10
ITEM3	ITEM3	DEFAULT		1 250.00	510.00000	10