



DEMO INSTALLATION

Thank you for your taking the time to investigate Palladium Accounting, Please follow these instructions on how to download the Palladium demo successfully.



STEPS Overview

Below is an overview of the steps to follow as outlined in the rest of this document.

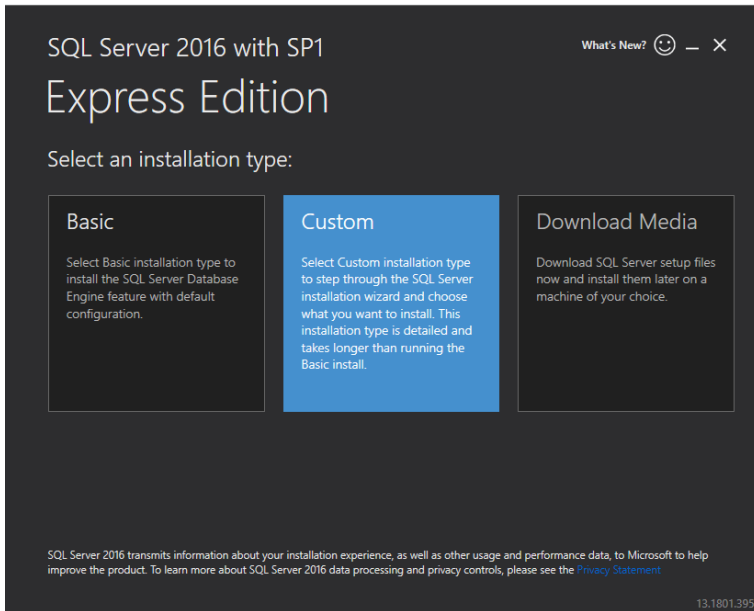


STEP 01

Download SQL

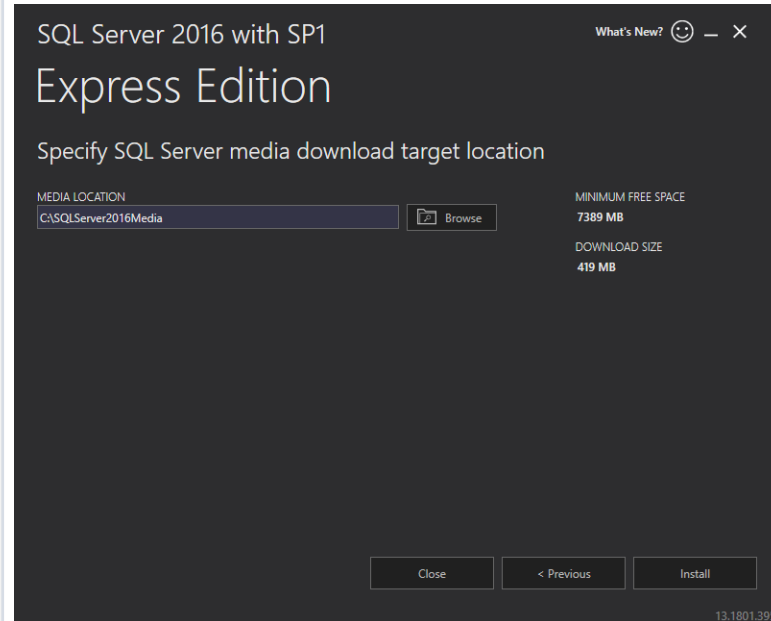
a.) Download SQL Express here –
<http://web.palladium.co.za/Downloads/SQLServer2016-SSEI-Expr.exe>

- Run the .exe file you have just downloaded
- Select **Custom**



b.) Specify media download location
Click **Install**

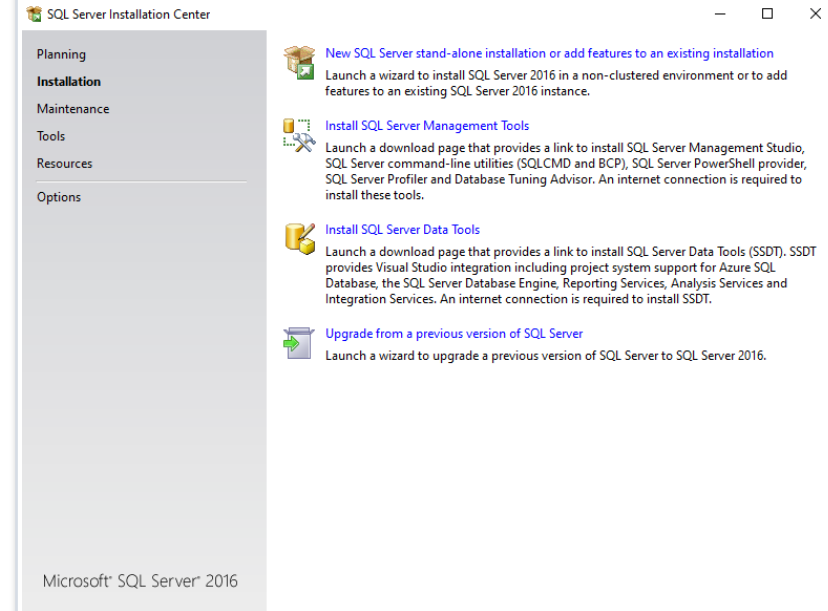
It will install SQL Express install files and then open the SQL Server installation center.



c.) SQL Server installation center.

Select **New SQL Stand-alone Installation**

Accept and select 'next' until you get to the Feature Selection.



Configure SQL

a.) On the **Feature Selection** screen, un-tick the “R – Services” box

SQL Server 2016 Setup

Feature Selection

Select the Express features to install.

License Terms
Global Rules
Microsoft Update
Product Updates
Install Setup Files
Install Rules
Feature Selection
Feature Rules
Instance Configuration
Server Configuration
Database Engine Configuration
Reporting Services Configuration
Feature Configuration Rules
Installation Progress
Complete

Features:

Instance Features

- Database Engine Services
 - SQL Server Replication
 - R Services (In-Database)
 - Full-Text and Semantic Extractions for Search
 - PolyBase Query Service for External Data
- Reporting Services - Native

Shared Features

- Client Tools Connectivity
- Client Tools Backwards Compatibility
- Client Tools SDK
- Documentation Components
- SQL Client Connectivity SDK
- LocalDB

Select All Unselect All

Instance root directory: C:\Program Files\Microsoft SQL Server\ ...

Shared feature directory: C:\Program Files\Microsoft SQL Server\ ...

Shared feature directory (x86): C:\Program Files (x86)\Microsoft SQL Server\ ...

Feature description:
The configuration and operation of each instance feature of a SQL Server instance is isolated from other SQL Server instances. SQL Server instances can operate side-by-side on the same computer.

Prerequisites for selected features:
Already installed:
Windows PowerShell 3.0 or higher
Microsoft Visual Studio 2010 Redistributables
Microsoft Visual Studio 2010 Shell

Disk Space Requirements
Drive C: 2661 MB required, 323211 MB available

< Back Next > Cancel



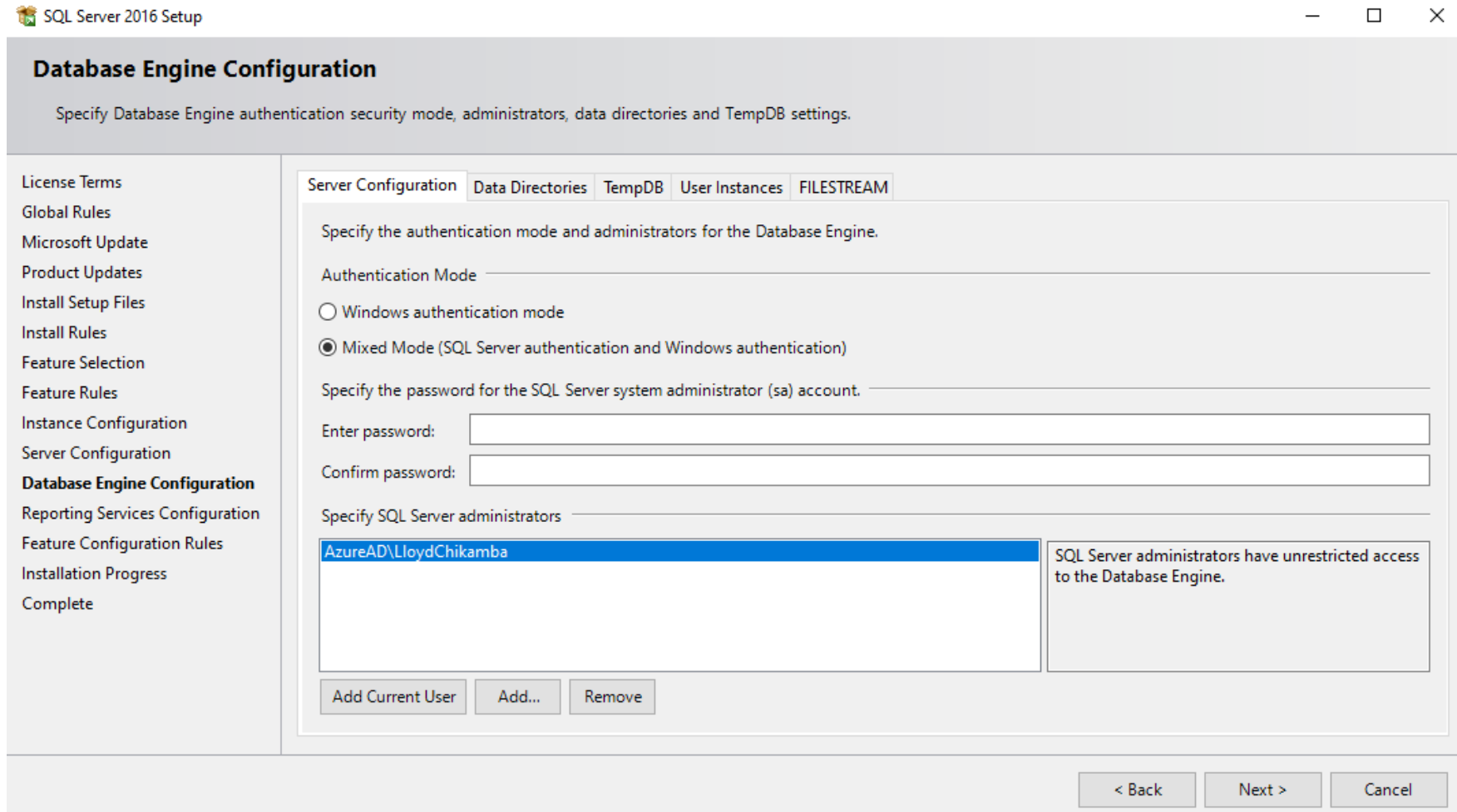
Configure SQL

b.) Continue selecting “next” until you get to the **Configuration screen**.

It is important to select **MIXED MODE** and enter a password.

You can enter System2008# as the password.

This step is very important!



SQL Server 2016 Setup

Database Engine Configuration

Specify Database Engine authentication security mode, administrators, data directories and TempDB settings.

License Terms
Global Rules
Microsoft Update
Product Updates
Install Setup Files
Install Rules
Feature Selection
Feature Rules
Instance Configuration
Server Configuration
Database Engine Configuration
Reporting Services Configuration
Feature Configuration Rules
Installation Progress
Complete

Server Configuration | Data Directories | TempDB | User Instances | FILESTREAM

Specify the authentication mode and administrators for the Database Engine.

Authentication Mode _____

Windows authentication mode

Mixed Mode (SQL Server authentication and Windows authentication)

Specify the password for the SQL Server system administrator (sa) account. _____

Enter password: _____

Confirm password: _____

Specify SQL Server administrators _____

AzureAD\LloydChikamba	SQL Server administrators have unrestricted access to the Database Engine.
-----------------------	--

Add Current User | Add... | Remove

< Back | Next > | Cancel

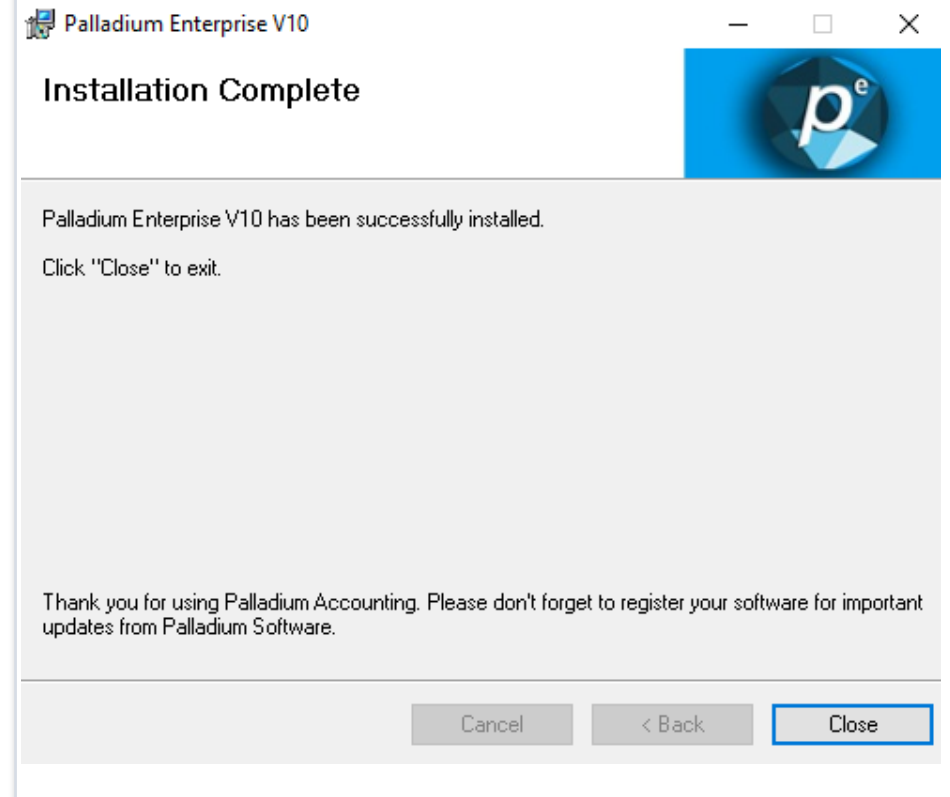


Download Palladium

a.) Download the required version of Palladium Accounting.



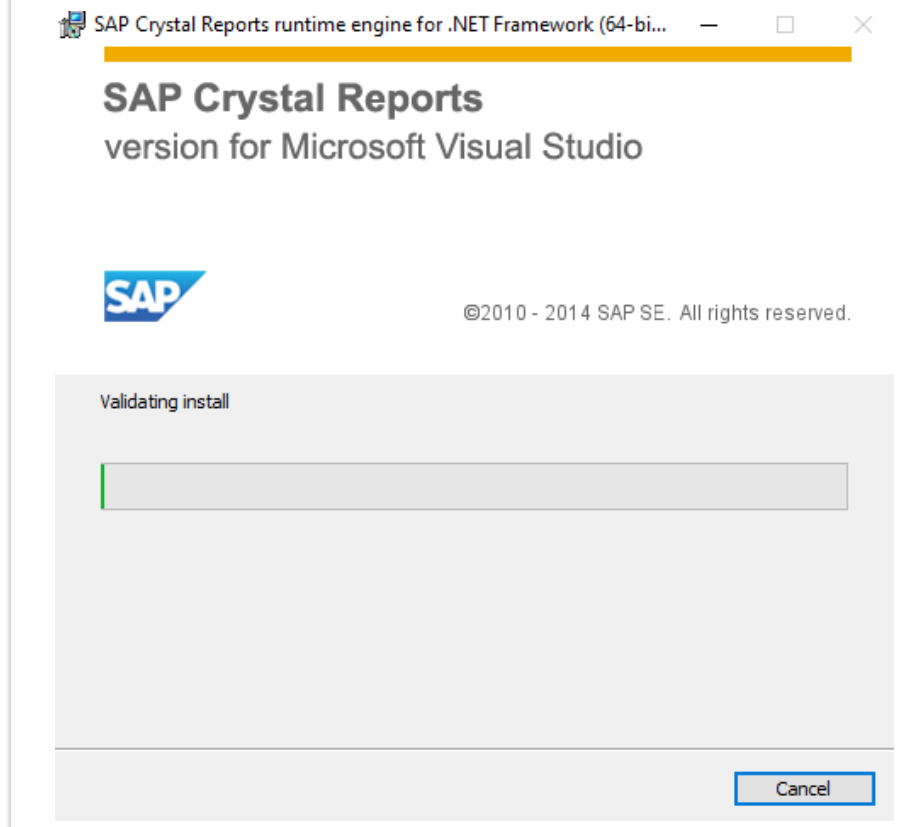
b.) Accept Terms and Conditions, Click Next until Installation Completes



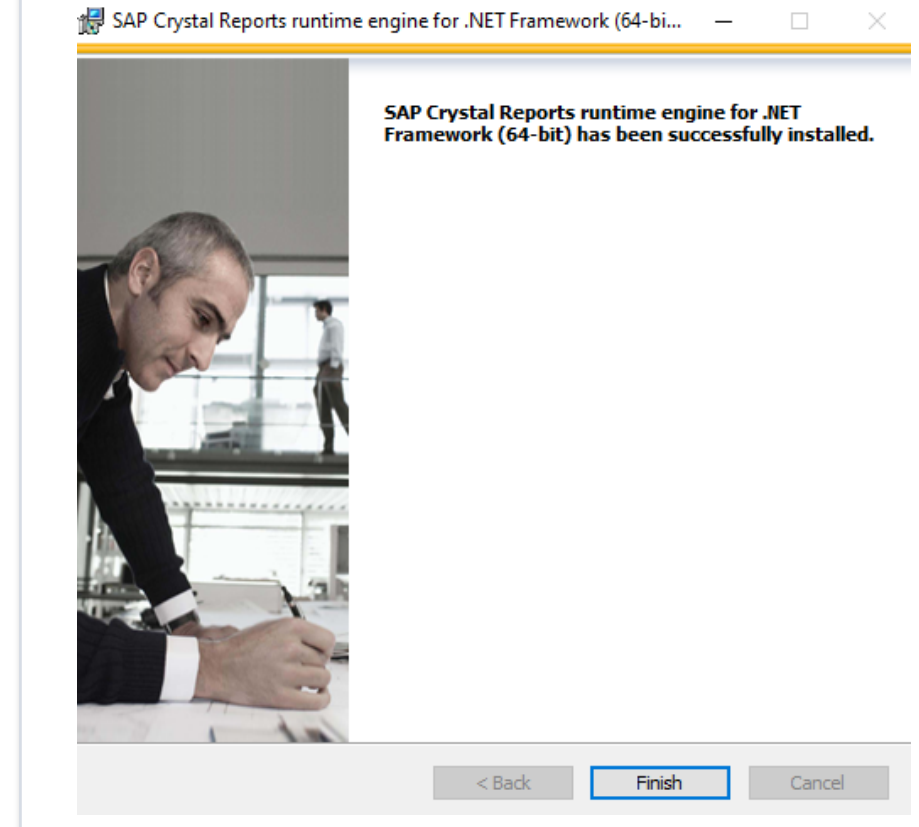
Download Crystal Reports

a.) Download and Run Crystal Reports

http://web.palladium.co.za/Downloads/Prerequisites/CRRuntime_64bit_13_0_12.msi



b.) Accept Terms and Conditions, Click Next until Installation Completes




Running Palladium

a.) Once you open Palladium, please use the below server connection details.

The Connection Name can be whatever you choose, but the rest must be the same.

Server Registration ✕

 Connection Name:

Microsoft SQL Server Location

Local (Local Computer / Default Instance)
Use this option if Microsoft SQL Server is running on this computer. SQL must be installed using the default instance.

Remote (Network / VPN) or User Defined Instance
Use this option if you will be connecting to another computer with Microsoft SQL Server running on it (network installation). You must specify the computer name or IP address of the remote computer.

Cloud Hosting
Use this option if your database will be hosted online by a 3rd party hosting company. You must specify the domain name or IP address of the remote computer.

Server Name:

VPN / Remote Access Mode
Use this option to optimise Palladium for use over VPN connections or remote internet connections. Do not use this option for networked installations (local area networks).

Server Login (Security)

Palladium Installed SQL Server
Use this option if you are connecting to SQL Server that was installed by Palladium.

User Installed SQL Server
Use this option if you are connecting to your own SQL Server or have changed the username or password on the Palladium installed server.

User: Password: Show

Cloud Login (Security)
The Group ID and Password is the unique association for your companies on the Cloud Server.

Group ID:
Password: Show

Server Port (Connection)

Connect to SQL Server on Port #:





DEMO INSTALLATION

Should you require any further information or would like to book a demo, kindly contact us

+27 (0)11 568 2900
sales@palladium.co.za
www.palladium.co.za